






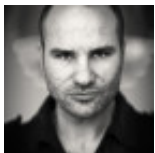
NEO

Neo's organic shape gives it a strong, personal identity while it is welcoming and nice to sit in at the same time. The bar stool is available with two different frames, a sled base frame customised to allow the bar stool to be stacked, and a swivel base, also available for floor mounting. The Neo bar stool is available in two heights, suitable for 900 mm or 1,100 mm high tables. The Neo range also includes a conference chair available in different finishes.

VARIANTS

	W	D	H	SH
	505 mm	480 mm	820/970 mm	630/780 mm
	450 mm	480 mm	825/975 mm	630/780 mm
	450 mm	480 mm	825/975 mm	630/780 mm

DESIGNER



Fredrik Mattson