






STACK

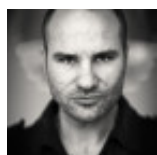
The Stack bar stool has the same outstanding design as the Stack chair. The seat shell is available in different finishes, colours, and wood types. Optional armrests, which not only offer support, but can also be used to hang the bar stools on tables which makes cleaning easier. The bar stool has a sled base which makes it stable and easy to stack. Available in two different heights. Optional accessories: upholstered seats.



VARIANTS

	W	D	H	SH
	510 mm	525 mm	950 mm	630 mm
	510 mm	525 mm	1100 mm	780 mm
	510 mm	525 mm	950/110 mm	630/780 mm

DESIGNER



Fredrik Mattson